

OWNER'S
MANUAL
FOR



PCC



**For Service on This Model Please Visit:
www.lonewolfdist.com/warranty**

THIS INSTRUCTION MANUAL SHOULD ALWAYS ACCOMPANY THIS FIREARM AND BE TRANSFERRED WITH IT UPON CHANGE OF OWNERSHIP, OR WHEN THE FIREARM IS LOANED OR PRESENTED TO ANOTHER PERSON.

NOTE: PICTURES SUBJECT TO CHANGE. MANUAL FOR BOTH CARBINE AND PISTOL VARIANTS OF ALPHA WOLF PCC.



**READ THE INSTRUCTIONS AND
WARNINGS IN THIS MANUAL CAREFULLY
BEFORE USING THIS FIREARM**

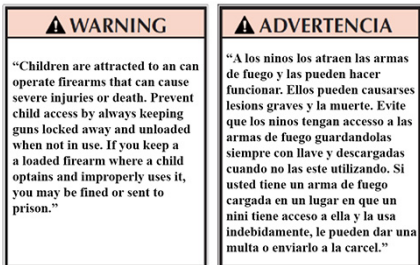


Founded 1998, Lone Wolf Distributors easily established itself as the leading Glock accessory supplier. Our QC starts with mill run quantities of raw materials. Our in-house engineers utilize CAD design exploiting exacting CNC tolerance control at all manufacturing levels. Our dynamic website displays real time, accurate inventory control allowing the vast majority of orders to process and ship the same day. Our customers demand premium upgrades that allow them increased performance. For these reasons LWD is unquestionably recognized as your best source for reasonably priced replacement parts.

From all of us at LWD, we thank you for your purchase. We know you have a choice in firearms suppliers and we are glad you chose us.

-JR Shepard

CEO and Owner
Lone Wolf Distributors

California:**Connecticut:**

“UNLAWFUL STORAGE OF A LOADED FIREARM MAY RESULT IN IMPRISONMENT OR FINE.”

Florida:

“IT IS UNLAWFUL, AND PUNISHABLE BY IMPRISONMENT AND FINE, FOR ANY ADULT TO STORE OR LEAVE A FIREARM IN ANY PLACE WITHIN THE REACH OR EASY ACCESS OF A MINOR UNDER 18 YEARS OF AGE OR TO KNOWINGLY SELL OR OTHERWISE TRANSFER OWNERSHIP OR POSSESSION OF A FIREARM TO A MINOR OR A PERSON OF UNSOUND MIND.”

Maine:

“ENDANGERING THE WELFARE OF A CHILD IS A CRIME. IF YOU LEAVE A FIREARM AND AMMUNITION WITHIN EASY ACCESS OF A CHILD, YOU MAY BE SUBJECT TO FINE, IMPRISONMENT OR BOTH. KEEP FIREARMS AND AMMUNITION SEPARATE. KEEP FIREARMS AND AMMUNITION LOCKED UP. USE TRIGGER LOCKS.”

Maryland:

“WARNING: Children can operate firearms which may cause death or serious injury. It is a crime to store or leave a loaded firearm in any location where an individual knew or should have known that an unsupervised minor would gain access to the firearm. Store your firearm responsibly!”

Massachusetts:

“WARNING FROM THE MASSACHUSETTS ATTORNEY GENERAL: This handgun is not equipped with a device that fully blocks use by unauthorized users. More than 200,000 firearms like this one are stolen from their owners every year in the United States. In addition, there are more than a thousand suicides each year by younger children and teenagers who get access to firearms. Hundreds more die from accidental discharge. It is likely that many more children sustain serious wounds, or inflict such wounds accidentally on others. To limit the chance of such misuse, it is imperative that you keep this weapon locked in a secure place and take other steps necessary to limit the possibility of theft or accident. Failure to take reasonable preventive steps may result in innocent

lives being lost, and in some circumstances, may result in your liability for these deaths.”

“IT IS UNLAWFUL TO STORE OR KEEP A FIREARM, RIFLE, SHOTGUN OR MACHINE GUN IN ANY PLACE UNLESS THAT WEAPON IS EQUIPPED WITH A TAMPER-RESISTANT SAFETY DEVICE OR IS STORED OR KEPT IN A SECURELY LOCKED CONTAINER.”

New Jersey:

“IT IS A CRIMINAL OFFENSE TO LEAVE A LOADED FIREARM WITHIN EASY ACCESS OF A MINOR.”

New York City:

“THE USE OF A LOCKING DEVICE OR SAFETY LOCK IS ONLY ONE ASPECT OF RESPONSIBLE FIREARM STORAGE. FOR INCREASED SAFETY, FIREARMS SHOULD BE STORED UNLOADED AND LOCKED IN A LOCATION THAT IS BOTH SEPARATE FROM HIS OR HER AMMUNITION AND INACCESSIBLE TO CHILDREN AND UNAUTHORIZED PERSONS.”

North Carolina:

“IT IS UNLAWFUL TO STORE OR LEAVE A FIREARM THAT CAN BE DISCHARGED IN A MANNER THAT A REASONABLE PERSON SHOULD KNOW IS ACCESSIBLE TO A MINOR.”

Texas:

“IT IS UNLAWFUL TO STORE, TRANSPORT, OR ABANDON AN UNSECURED FIREARM IN A PLACE WHERE CHILDREN ARE LIKELY TO BE AND CAN OBTAIN ACCESS TO THE FIREARM.”

Wisconsin:

“IF YOU LEAVE A LOADED FIREARM WITHIN THE REACH OR EASY ACCESS OF A CHILD YOU MAY BE FINED OR IMPRISONED OR BOTH IF THE CHILD IMPROPERLY DISCHARGES, POSSESSES, OR EXHIBITS THE FIREARM.”

Please check with your licensed retailer or state police for additional warnings which may be required by local law or regulation. Such regulations change constantly, and local authorities are in the best position to advise you on such legal matters.

1 SAFETY

FIREARMS SAFETY IS YOUR RESPONSIBILITY

You must read, understand, and follow all the instructions in this manual before loading, disassembling or using this firearm.

If you do not understand any part of this manual or you are unsure about the operation of your firearm, please refer to www.lonewolfdist.com/warranty before proceeding.

This manual provides instructions on the operation and maintenance of Alpha Wolf PCC carbines made by Lone Wolf Distributors. You must read, understand and follow the instructions and safety warnings in this manual. The safety of yourself and those around you depends on your knowledge of your firearm and of the safety guidelines common to all firearms. Safety Alert Symbol and Signal Words

The safety information in this manual is denoted by the safety alert symbol:



The level of risk is indicated by the following signal words:

- **DANGER** - Indicates a hazardous situation, which, if not avoided, will result in death or serious injury.
 - **WARNING** - Indicates a hazardous situation, which, if not avoided, could result in death or serious injury.
 - **CAUTION** - Indicates a hazardous situation, which, if not avoided, could result in minor or moderate injury.
 - **NOTICE** - Indicates a situation that could result in damage to the equipment or other property.
- ❖ **WARNING** - You must follow all the safety guidelines to ensure the safe use of your firearm. Failure to follow these basic firearm safety guidelines may result in an unintended discharge which could cause serious injury or death.
 - ❖ **CAUTION** - Do not use “+P” ammunition in your firearm. Use of +P ammunition will void the warranty and may result in damage to the firearm or injury to the user or bystanders.
 - ❖ The safe use of your firearm is your responsibility. You must protect yourself and others against injury or death from misuse of a firearm.
 - ❖ Always treat every firearm as if it were loaded.
 - ❖ Do not drop your firearm, as it may discharge on impact.
 - ❖ Always point the firearm in a safe direction.
 - ❖ Always keep your finger off the trigger until ready to fire.

- ❖ Always be sure of your target and what is beyond your target.
- ❖ Firearms must be unloaded when not in use. Load your firearm only when you are in the field or target range and ready to fire. Never let a loaded firearm out of your sight. Never climb a tree or cross obstacles such as streams, creeks or fences with a loaded firearm. Completely unload firearm as soon as you are finished shooting. Unload firearm before storing it, traveling, laying it down or entering a vehicle or building. Always verify that a firearm is unloaded. Do not take anyone's word that a firearm is unloaded. Never pass your firearm to another person until both you and the other person have visually checked that it is unloaded. Keep your firearm unloaded and safely stored when not in use.
- ❖ Never rely on your firearm mechanical features alone. Only your safe handling of your firearm will ensure the safe use of your firearm. A mechanical safety is not a substitute for common sense.
- ❖ Before using a stored firearm, verify the firearm is completely unloaded, and check the barrel for any obstructions, debris, or excess oil. Never allow water, snow, mud or other materials to enter the barrel. Excess lubricants or grease can dangerously increase pressure and may cause barrel to burst when firing. If barrel is obstructed, remove ammunition and clean barrel immediately.
- ❖ Use only the correct caliber and cartridge for your firearm. Never use incorrect ammunition. Never use remanufactured or reloaded ammunition. Use only quality undamaged ammunition in your firearm. Always read and follow the instructions on the ammunition box. Do not use the firearm if you have any doubt as to the caliber or cartridge the firearm is designed to use.
- ❖ Safely store and secure your firearm and ammunition separately.
- ❖ Be sure of your target and the surrounding area. Never fire unless you know exactly where your shot is going and what it will strike. Make sure the shot has a safe back stop, such as a hillside or sand. Bullets can ricochet on surfaces such as water and frozen ground. Do not fire into the sky.
- ❖ Always wear appropriate eye and ear protection while firing a firearm. Be sure others in the vicinity have protection. Persons without eye and hearing protection must be 10 yards or more behind the firearm when it is fired.
- ❖ Obey all laws regarding the storage, security, transportation and carrying of firearms. You must be familiar with all local, state, and federal laws regarding the safe use, storage and/or transportation of your firearm. Your local police department can answer any questions you may have regarding the legal use, storing and/or transporting of your firearm.
- ❖ Discharging firearms in poorly ventilated areas, cleaning the firearm and handling ammunition may result in exposure to lead and other substances known to cause birth defects, reproductive harm, cancer, and other serious



physical injury. Wash hands thoroughly after exposure. Read the warnings and labels of all ammunition and cleaning products carefully.

- ❖ In the event of a misfire or hang-fire, leave the bolt closed, remove the magazine and wait 15 minutes with the barrel pointing in a safe direction. Keep your face away from the breach and put the safety on. This way you won't be hurt by a round possibly "cooking-off" (i.e. the round detonating just from the heat of the barrel). In any event, keep your face away from the ejection port while clearing a hot chamber. *See Malfunctions.* Unload your firearm and dispose of the ammunition safely. If the bullet has become lodged in the barrel, remove the bullet with a cleaning rod. Do not attempt to fire another round to dislodge the bullet.
- ❖ Be sure all accessories are compatible with your firearm. Accessories must not interfere with the safe operation of your firearm.
- ❖ This manual must accompany this firearm and be transferred with it upon change of ownership or when presented to another person.
- ❖ Never use drugs or alcohol before or during use of a firearm. Never use a firearm if you are taking any medication which impairs your mental or physical ability.
- ❖ Never alter or modify your firearm. Never disassemble your firearm beyond what is outlined in this manual. Improper manipulation of any internal components and/or improper disassembly or reassembly may be dangerous, and may lead to serious injury or death. Do not try to change your firearm's trigger pull, as alterations might cause accidental firing. Have a qualified, experienced gunsmith service, repair or upgrade your firearm.
- ❖ Understand all operational aspects of the firearm before handling. Every firearm is different. Before using the firearm, read and follow this manual. Familiarize yourself with all mechanical features of your firearm. If you do not understand any part of this manual or have any questions about the safe operation of your firearm, please refer to www.lonewolfdist.com/warranty before proceeding.
- ❖ Lone Wolf Distributors is not responsible for any physical injury or death, property damage, or damage to a firearm resulting in whole or in part from:
 - Intentional or negligent discharge or firing of the firearm
 - Improper or careless use or handling of the firearm.
 - Unauthorized modifications or repairs to the firearm
 - Defective, improper, remanufactured or reloaded ammunition, or "+P" ammunition.
 - Neglect of the firearm or other causes beyond the control of the company.

- ❖ If your firearm stops firing with a live round in the chamber of a hot barrel (misfire), remove the round quickly. However, if you cannot remove it within 10 seconds, remove the magazine and wait 15 minutes with the barrel pointing in a safe direction. This way you won't be hurt by a round possibly "cooking-off" (i.e. the round detonating just from the heat of the barrel). In any event, keep your face away from the ejection port while clearing a hot chamber. See *Malfunctions*.

2 MAJOR COMPONENTS

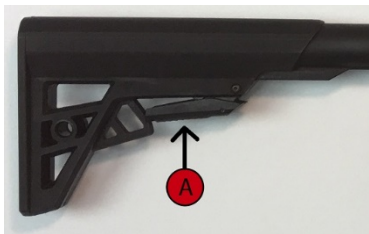


- A. Lower Receiver
- B. Upper Receiver
- C. Magazine
- D. Stock

3 COLLAPSIBLE STOCK

- ❖ **WARNING - Risk of serious injury or death. A loaded firearm may discharge unintentionally. Point the firearm in a safe direction before adjusting stock.**

- Place safety selector on SAFE.
- Point firearm in a safe direction.
- The stock can be set to one of several positions. Squeeze latch (A) and move stock in or out to desired position and release latch (A). Verify latch is engaged in a detent. You may need to move stock slightly to engage in a detent.



4 INSPECT FOR AMMUNITION

- ❖ **WARNING - Risk of serious injury or death. A loaded firearm may discharge unintentionally. Point the firearm in a safe direction while inspecting for ammunition.**

1. Place safety selector (A) on SAFE.



Note: If hammer is not cocked, safety selector cannot be placed on SAFE.

2. Pull charging handle (B) rearward. While retaining bolt in rearward position, engage bolt catch by pushing inward on its lower portion (C) and slowly releasing charging handle until bolt catch engages bolt and locks it open.
3. Grasp the firearm while keeping your finger off the trigger. Press the magazine catch button (D) and remove magazine (E).



4. Look into the receiver and verify that there is no ammunition in the chamber (F). With safety selector pointing toward SAFE, allow bolt to close by pulling the charging handle (B) slightly rearward to release the bolt catch, then let the charging handle (B) go and the bolt close. Follow this inspection procedure before cleaning, before storage, before transporting, before handing to another person or when handed to you.



5 AMMUNITION

- ❖ **DANGER - Risk of serious injury or death. Failure to use the proper gauge or caliber of ammunition will cause your firearm to fail when firing. Always use ammunition specifically designed for use in your firearm.**
- ❖ **You are responsible for using ammunition that is specifically designed for your firearm and that meets industry standards for use in your firearm. Never mix ammunition.**
- ❖ **Using ammunition not specifically designed for your firearm can cause the pressure to exceed the capability of your firearm, and could damage and/or rupture your firearm.**



Locate the caliber mark (A) on the firearm. This designates the ammunition caliber that must be used in your firearm. The caliber marking is on the lower receiver and/or barrel, but may appear in a different location on your firearm.

Always inspect your ammunition before loading it. Never use damaged or corroded ammunition which could lead to a burst cartridge causing damage to the firearm and possible personal injury or death.

Always use factory new (not reloaded or remanufactured), brass-cased, American-made (by a reputable commercial manufacturer) ammunition in the appropriate caliber and bullet weight for your firearm's chamber and rifling. Do not use +P ammunition in your firearm.

6 LOADING

- ❖ **WARNING - Risk of serious injury or death. Always point the barrel of your firearm in a safe direction when loading or unloading.**

Clean your firearm before the first use. Your firearm has been treated at the factory to prevent corrosion. The chamber, bore, and exterior surfaces must be cleaned to remove excess oil.

- ❖ **Load your firearm only when you are in the field or target range, when you are sure of the target and ready to fire.**

1. Inspect the firearm for ammunition if you have not done so. *See Inspect for Ammunition.*
2. Verify that the safety selector (A) is in the SAFE position.



Note: If hammer is not cocked, safety selector cannot be placed on SAFE.

3. Pull the charging handle (B) back and release, the bolt should spring forward. Be sure the bolt is fully forward and locked.

❖ WARNING - Risk of serious injury or death. Using damaged, incorrect, non-standard, or hand loaded ammunition may result in firearm failure or misfire. Use only quality undamaged ammunition in your firearm.

4. Inspect each cartridge for signs of damage. Do not load damaged ammunition. Load the magazine with the proper caliber of undamaged ammunition.

5. Push the magazine up into the magazine well until the magazine release button (D) engages and holds the magazine. Use your hand and tap on the bottom of the magazine to be sure it is seated.



❖ WARNING - Risk of serious injury or death. After performing step 6, the firearm is loaded and will fire if the safety selector is set to FIRE and the trigger is pulled. Keep the firearm pointed in a safe direction always.

6. To load a round into the chamber, pull the charging handle (B) fully rearward and release. A round from the magazine is now loaded into the chamber.



❖ WARNING - Never insert a round into the chamber through the ejection port. Load the chamber by feeding a round from the magazine only.

- ❖ **WARNING - You must follow all the safety guidelines to ensure the safe use of your firearm. Failure to follow these basic firearm safety guidelines may result in an unintended discharge which could cause serious injury or death.**
- ❖ **Always point the firearm in a safe direction. Be alert and follow safety instructions.**
- ❖ **Be aware of others. Persons in the vicinity of your shooting may unintentionally walk into your line of fire.**
- ❖ **Always wear appropriate eye and ear protection while firing. Be sure others in the vicinity have protection. Persons without eye and hearing protection must be 10 yards or more behind the firearm when it is fired.**



7 FIRING

1. Grasp the firearm with one hand on the forearm and the other on the grip.
- ❖ **Do not grasp magazine well or magazine. Grasping magazine may tip the magazine, resulting in a misfeed. In the unlikely event of an out-of-battery detonation of a round, the firearm is designed to force the generated blast downward through the magazine well.**
2. Move the safety selector (A) to FIRE.



3. Aim at the target and gently pull the trigger with your index finger to fire. Release trigger and point the firearm in a safe direction.

- When you stop firing, remove your finger from the trigger. Place the safety selector (A) in the SAFE position.



Note: If hammer is not cocked, safety selector cannot be placed on SAFE. Always check the chamber to verify it is empty.

- ❖ **WARNING - Risk of serious injury or death. The firearm may have a round in the chamber even though the magazine has been removed. Keep the firearm pointed in a safe direction while the magazine is reloaded.**
- Unload the firearm. *See Unloading.*
 - Remove magazine and reload if you plan to continue shooting. *See Loading.*

8 MALFUNCTIONS

- ❖ **WARNING - Risk of serious injury or death. If your firearm is not operating properly, stop firing immediately. Point the firearm in a safe direction and unload the firearm. Safely store the firearm and take it to a qualified gunsmith for inspection.**

If a cartridge jams or hangs up while moving from the magazine into the chamber, do not attempt to force the cartridge into the chamber. If your firearm misfires or jams:

- Place safety selector (A) on SAFE.



Note: If hammer is not cocked, safety selector cannot be placed on SAFE.

2. Pull charging handle (B) rearward. While retaining bolt in rearward position, engage bolt catch by pushing inward on its lower portion (C) and slowly releasing charging handle until bolt catch engages bolt and locks it open.



3. Grasp the firearm while keeping your finger off the trigger. Press the magazine catch button (D) and remove magazine (E).



4. Look into the receiver and verify that there is no ammunition in the chamber (F). With safety selector pointing toward SAFE, allow bolt to go forward by pulling the charging handle back and bringing it forward.



- ❖ **If your firearm stops firing with a live round in the chamber of a hot barrel (misfire), remove the round quickly. However, if you cannot remove it within 10 seconds, remove the magazine and wait 15 minutes with the barrel pointing in a safe direction. This way you won't be hurt by a round possibly "cooking-off" (i.e. the round detonating just from the heat of the barrel). In any event, keep your face away from the ejection port while clearing a hot chamber.**
5. If the cartridge cannot be removed, verify that safety selector is in SAFE position.

NOTICE - Pushing takedown pin past the second detent position (with closed being the first position) will result in irreparable damage to the lower receiver.

- While the barrel is still pointed down range, push takedown pin (G) to the second detent position. If tight, use the chamber flag as a tool to push pin to second detent position. Never use a punch to drive the pin.



NOTICE - Pushing pivot pin past the second detent position (with closed being the first position) will result in irreparable damage to the lower receiver.

- Push pivot pin (H) to the second detent position. If tight, use the chamber flag as a tool to push pin to second detent position. Never use a punch to drive the pin.
- Separate upper receiver from lower receiver.
- Remove bolt carrier group if possible. Take components to a competent and qualified gunsmith for repair.

9 UNLOADING

- ❖ **Firearms must be unloaded when not in use. Completely unload firearm as soon as you are finished shooting. Unload firearm before storing it, traveling, laying it down or entering a vehicle or building. Always verify that a firearm is unloaded. Do not take anyone's word that a firearm is unloaded. Never pass your firearm to another person until both you and the other person have visually checked that it is unloaded. Keep your firearm unloaded and safely stored when not in use.**
- ❖ **WARNING - Risk of serious injury or death. Always point the firearm in a safe direction.**

1. Place safety selector (A) on SAFE.

Note: If hammer is not cocked, safety selector cannot be placed on SAFE.



2. Pull charging handle (B) rearward. While retaining bolt in rearward position, engage bolt catch by pushing inward on its lower portion (C) and slowly releasing charging handle until bolt catch engages bolt and locks it open.



3. Grasp the firearm while keeping your finger off the trigger. Press the magazine catch button (D) and remove magazine (E).



4. Look into the receiver and verify that there is no ammunition in the chamber (F).



10 DISASSEMBLY

- ❖ **WARNING - Risk of serious injury or death. Verify that the firearm is not loaded before any disassembly or cleaning. Always point the firearm in a safe direction.**
- ❖ **WARNING - Risk of serious injury or death. Do not disassemble firearm any further than instructed in this manual. Do not modify or alter firearm. Never interchange parts from other firearms.**
- ❖ **WARNING - Disassembling the firearm and the handling of ammunition and cleaning products may result in exposure to lead and other substances known to cause birth defects, reproductive harm, cancer, and other physical injury. Wash hands thoroughly after exposure. Read the warnings and labels on all ammunition and cleaning products carefully. ^ WARNING - Risk of eye injury. Wear eye protection while disassembling firearm.**

10.1 SEPARATE UPPER AND LOWER RECEIVER

1. Verify that the firearm is not loaded. *See Inspect for Ammunition*
2. Verify safety selector is on SAFE and bolt is in the forward position.

NOTICE - Pushing takedown pin past the second detent position (with closed being the first position) will result in irreparable damage to the lower receiver.

3. Push takedown pin (A) to the second detent position. If tight, use the chamber flag as a tool to push pin to second detent position. Never use a punch to drive the pin.

NOTICE - Pushing pivot pin past the second detent position (with closed being the first position) will result in irreparable damage to the lower receiver.

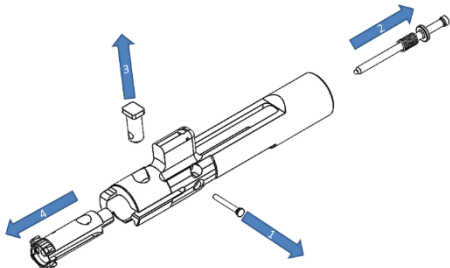
4. Push pivot pin (B) to the second detent position. If tight, use the chamber flag as a tool to push pin to second detent position. Never use a punch to drive the pin.



5. Separate upper receiver from lower receiver.
6. Pull the charging handle (C) out from the bolt carrier, the bolt carrier should now slide out.

10.2 DISASSEMBLE BOLT

1. Remove the firing pin retaining pin (1). Do not distort the ends of the retaining pin. Note that you can use the Charging Handle to push the Firing Pin Retainer out.



2. Remove the Firing Pin and Firing Pin Spring (2) from the bolt carrier group.

3. Remove bolt cam pin (3) from bolt carrier assembly. If bolt cam pin cannot be removed, contact Lone Wolf Distributors at www.lonewolfdist.com.

4. Remove bolt (4) from bolt carrier.

- ❖ **WARNING - Risk of serious injury or death. Do not disassemble the firearm any further than instructed in this manual.**
- ❖ **WARNING - Do not modify or alter any part of the firearm.**

11 CLEANING

- ❖ **WARNING - Risk of serious injury or death. Always point the firearm in a safe direction.**
- ❖ **WARNING - Risk of eye injury. Wear eye protection while cleaning firearm.**

NOTICE - Risk of firearm damage. Some cleaning solutions and solvents may damage your firearm. Use a cleaning solution that is designed for use on firearms.

Do not allow cleaning rods to scratch/score the inside of the barrel or chamber. RRA recommends the use of a single-piece coated cleaning rod. RRA also recommends cleaning from the breech (chamber) to the muzzle and removal of the patch, brush, jag, or other cleaning device from the rod prior to pulling the rod back through the bore.

NOTICE - Risk of firearm damage. Never use a bore brush or any abrasive materials or cleaning items on the inside of the gas block. Scratches on the inside bore of the gas block will cause irreparable damage to the gas block or gas system.

Commercial firearm cleaning kits are available from your firearms dealer. Follow the instructions included with the cleaning kit. Use a high-quality firearm cleaning kit that includes a cleaning rod, swab holder, cotton flannel bore patches, a small toothbrush, brass wire bristle bore and chamber brushes and a Cleaner/Lubricant/Preservative.

Before initial use and after firing, clean your firearm as soon as possible to make the job easier and to avoid allowing the development of any corrosion.

When your firearm has not been fired, you should clean it at least once or twice a year if you live in a temperate climate, or as often as once a week in a tropical climate. If the firearm should get wet, dry and clean as soon as possible. Lightly oil once clean and dry.

11.1 CLEANING THE EXTERIOR

- ❖ **Remove the magazine, verify that the firearm is not loaded, and safety selector is on SAFE.**

Note: If hammer is not cocked, safety selector cannot be placed on SAFE.

Wipe all metal surfaces with a clean cloth and then follow up with a lightly oiled cloth.

11.2 CLEANING THE BARREL

- ❖ **Remove the magazine, verify that the firearm is not loaded, and safety selector is on SAFE.**

Note: If hammer is not cocked, safety selector cannot be placed on SAFE.

Lone Wolf Distributors recommends cleaning the barrel with the upper half removed from the lower half.

Clean the barrel with a cotton patch attached to a cleaning rod. Moisten the patch with cleaning solution. Repeat with clean patches until patch stays clean. Apply cleaning solvent to a bronze bore brush to help loosen particles inside the barrel. After cleaning, run a dry patch through the barrel and then follow with a lightly oiled patch.

11.3 CLEANING THE CHAMBER

- ❖ **Remove the magazine, verify that the firearm is not loaded, and safety selector is on SAFE.**

Note: If hammer is not cocked, safety selector cannot be placed on SAFE.

Clean the chamber and barrel locking lugs with solvent and a chamber cleaning brush. Move the brush through the chamber several times to scrub the inside of the chamber. Use a clean patch to wipe the chamber after cleaning. Repeat with clean patches until patch stays clean. Once clean, apply a light coating of oil to the chamber (remove prior to shooting).

11.4 CLEANING THE LOWER RECEIVER

- ❖ **Remove the magazine, verify that the firearm is not loaded, and safety selector is on SAFE.**

Note: If hammer is not cocked, safety selector cannot be placed on SAFE.

Wipe all metal surfaces with a clean cloth and then follow up with a lightly oiled cloth. Compressed air is useful when cleaning the lower receiver. Always wear eye protection when cleaning with compressed air.

Wipe any debris from the trigger mechanism.

Never apply grease to trigger mechanism.

11.5 CLEANING THE UPPER RECEIVER

- ❖ **Remove the magazine, verify that the firearm is not loaded, and safety selector is on SAFE.**

Note: If hammer is not cocked, safety selector cannot be placed on SAFE.

Wipe all interior and exterior surfaces with a clean cloth and then follow up with a lightly oiled cloth.

Wipe any debris from the bolt carrier channel.

11.6 CLEANING THE BOLT CARRIER GROUP

Wipe all bolt carrier group surfaces with a clean cloth and then follow up with a lightly oiled cloth.

Clean any carbon fouling/buildup from both the bolt and carrier. Wipe any debris from the bolt, firing pin, retaining pin, cam pin and extractor.

Checks:

- Check the bolt for cracks or fractures, especially in the cam pin hole area. Bolts with any pitting extending into the firing pin hole must be replaced.
- Check the firing pin to see if it is bent, cracked, too blunt, too sharp or if tip is pitted. If so, it must be replaced.
- Verify that the firing pin moves freely forward and rearward when inserted into the bolt.
- Check firing pin retaining pin to see if it is bent or badly worn. If so, it must be replaced. Never use a cotter pin as a substitute for a firing pin retaining pin. Cotter pins are not made of heat treated spring steel and their round head shape will cause damage.
- Check the cam pin to see if it is cracked, worn or chipped. If so, it must be replaced.
- Check the extractor and extractor spring to see if the extractor is chipped or has broken edges in the area of the lip that engages the cartridge rim. If so, it must be replaced.

11.7 CLEANING THE GAS SYSTEM

- ❖ **Remove the magazine, verify that the firearm is not loaded, and safety selector is on SAFE.**

NOTICE: For best performance, clean the gas system as directed here and replace the gas piston o-rings as needed.

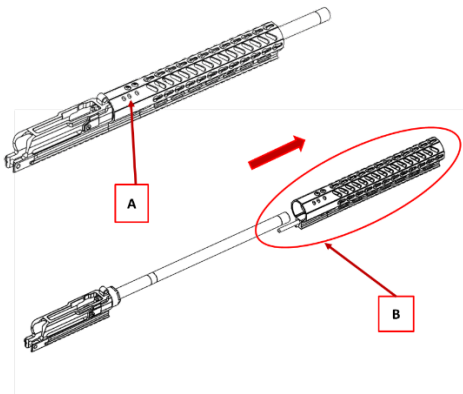
NOTICE: NEVER use any abrasive materials, abrasive cleaners, or abrasive tools including abrasive brushes to clean the gas system. Use of abrasive materials, abrasive

cleaners, or abrasive tools inside of the gas system will damage the gas system and void the warranty.

NOTE: To easily clean or maintain the gas system, the Gas Block/Forearm Assembly (B) can be removed from the rifle in one piece.

NOTE: Do not remove the forearm from the gas block unless it is necessary to service the gas plug - this will preserve alignment of the forearm with the rifle and any attachments on the forearm with the rifle.

- A. Gas Block Clamp Screws - Loosen these per instructions below to remove Gas Block/Forearm Assembly
- B. Gas Block/Forearm Assembly - See instructions below



Removing the Gas Block/Forearm Assembly and cleaning the Gas System

- Remove the bolt carrier group from the upper receiver.
- The three holes on the bottom right side of the forearm allow access to the gas block clamp screws (A).
- Use a 9/64" Hex/Allen Driver and following the screw loosening pattern below. Turn each of the three gas block clamp screws (A) about 1/4 turn at a time until all screws are loose (typically 1-2 full turns).
 - Turn Middle screw 1/4 turn counterclockwise

- Turn Front screw ¼ turn counterclockwise.
 - Turn Back screw ¼ turn counterclockwise.
 - Repeat the pattern above until Gas Block/Forearm Assembly (B) slides free.
 - Do not loosen the screws any more than necessary to cause the gas block to slide free.
- Slide the forearm/gas block off the barrel, being careful to not scratch the barrel.
 - Remove the gas piston by pulling it out of the gas block. Inspect the Piston o-rings and replace if necessary. Wipe the piston clean.
 - Using powder solvent, saturate the inside of the piston bore and let it sit for 10-15 min to loosen all powder.
 - Use a soft swab to clean the inside of the gas piston bore.
 - If available, use compressed air to blow out the gas piston bore.
 - Use clean swabs to remove all powder solvent and any other materials or fluids from the gas system.

Reassembling the Gas Block/ Forearm Assembly with the Upper Receiver

- Insert the piston into the gas piston bore.
- Ensure the barrel is free from dirt, debris, or any fluids or oil.
- Slide the Gas Block/Forearm Assembly (B) onto the barrel.
- Ensure that the gas block/forearm assembly is slid back as far as it will go on the barrel.
- Use a 9/64" Allen Driver, and following the pattern below, turn each gas block clamp screws (A) about 1/4 turn at a time until all screws are tight to 45 in*lbs. torque. NOTICE: Use of a torque wrench is recommended for installing the gas block/forearm assembly.

NOTICE: Follow the tightening pattern and do not over-tighten screws the gas block clamp screws.

- Turn Middle screw ¼ turn clockwise.
- Turn Front screw ¼ turn clockwise.
- Turn Back screw ¼ turn clockwise.

12 LUBRICATION

❖ **WARNING - Risk of eye injury. Wear eye protection while lubricating firearm.**

12.1 UPPER RECEIVER

Lightly lubricate with Cleaner/Lubricant/Preservative (never use a heavy oil or grease):

- The inside of the upper receiver, bore and chamber using the cleaning rod and a patch.
- The outer surfaces of barrel.

12.2 LOWER RECEIVER

Lightly lubricate with Cleaner/Lubricant/Preservative (never use a heavy oil or grease):

- All moving lower receiver parts including the trigger, hammer, safety, bolt catch, forward assist and their various pins and detents. Don't forget the takedown pin, pivot pin and detents.
- Using Cleaner/Lubricant/Preservative and a clean cloth, wipe the receiver and any other components clean of fingerprints.

12.3 BOLT CARRIER GROUP

Lightly lubricate with Cleaner/Lubricant/Preservative (never use a heavy oil or grease):

- The firing pin and the firing pin recess in the bolt.
- The charging cradle and the inner and outer surfaces of the bolt carrier.
- The bolt, cam pin and bolt gas rings.
- The extractor and extractor pin.
- The slide and cam pin area of the bolt carrier.
- The inside of the carrier key on the bolt carrier should be dried with a cotton swab, then place one drop of Cleaner/Lubricant/Preservative inside.

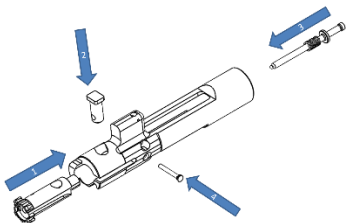
❖ **WARNING - Risk of eye injury. Wear eye protection while assembling firearm.**

12.4 GAS SYSTEM

NOTICE: Do NOT lubricate the gas piston or gas piston bore with any substance. The gas system is designed to operate without lubrication.

12.5 ASSEMBLE BOLT

1. Insert bolt into Bolt Carrier.
2. Insert cam pin into Bolt Carriers.
3. Ensure the firing pin spring is on the firing pin, insert both into Bolt Carrier, ensure firing pin has clearance all the way through the bolt, you may need to rotate the cam pin to do this.
4. Press firing pin forward to allow firing pin retainer to be placed behind it, then insert the firing pin retainer.



12.6 INSTALL BOLT CARRIER

1. Insert the bolt carrier with bolt facing forward into the upper receiver.
2. Insert charging handle into bolt carrier.

12.7 ASSEMBLE UPPER AND LOWER RECEIVER

1. Reassemble upper and lower receiver and push pivot pin (A) in.
2. Verify that hammer is locked back and safety selector on SAFE.
3. Close the upper and lower receivers and push takedown pin (B) in.



13 WARRANTY

The warranty obligations of Lone Wolf Distributors (“LWD”) for this product are limited to the terms listed at: www.lonewolfdist.com/warranty.

14 OTHER INFORMATION

**The imagery and language contained in this owner’s manual are subject to change.

**This owner’s manual covers all Alpha Wolf PCC pistol caliber carbine firearms, in all calibers.

Notes:



Lone Wolf Distributors, Inc.
106 Shannon Lane
Priest River, ID 83856

Hours
Mon-Fri
8:00AM-4:00PM PST

Warranty Information:
www.lonewolfdist.com/warranty

www.lonewolfdist.com